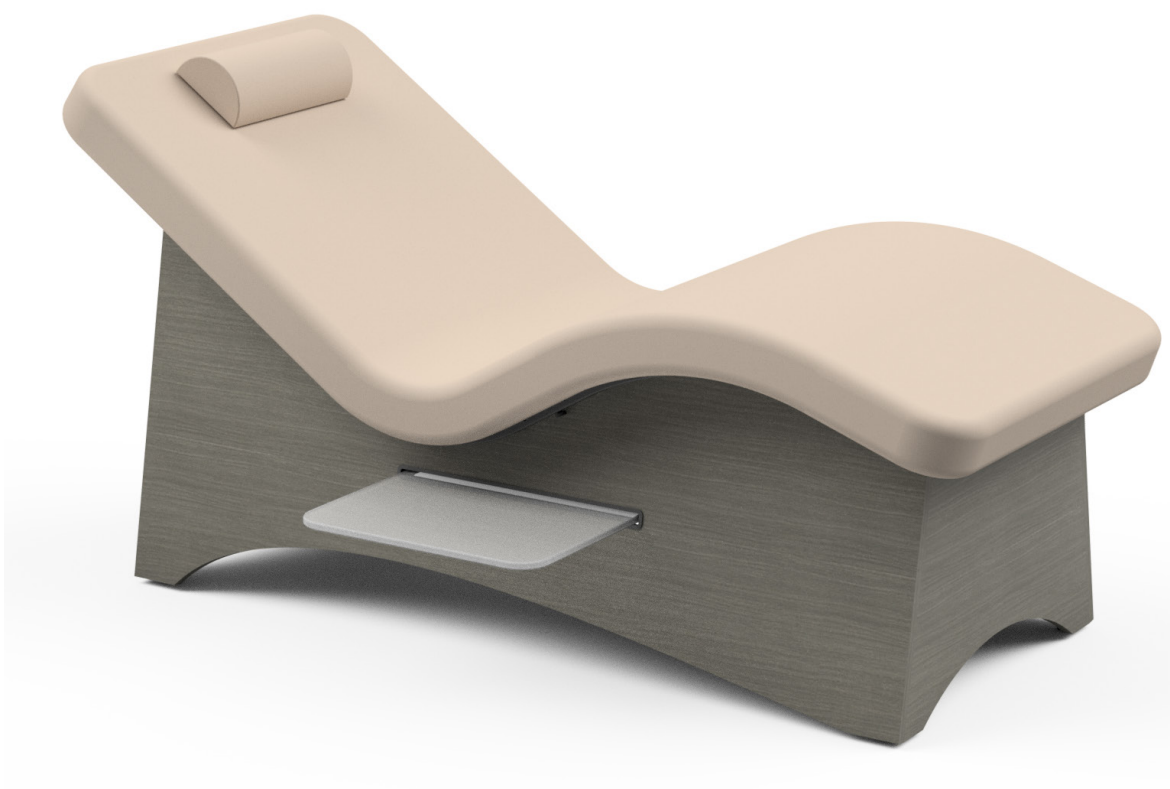


USER MANUAL - WELLNESS

OAKWORKS®

Lounger



www.OAKWORKS.com · 717.235.6807



OAKWORKS® *Spa*

Printed in U.S.A.

All rights are reserved. No part of this document may be photocopied, reproduced or translated to another language without prior written consent of OAKWORKS®, Inc.

OAKWORKS® is a registered trademark of OAKWORKS®, Inc.

Notice

The information contained within this document is subject to change without notice and should not be construed as a commitment by OAKWORKS®, Inc.

OAKWORKS®, Inc. encourages requests for technical specifications and the like documentation to ensure accuracy. The appropriate documentation is available upon request.

OAKWORKS®, Inc. shall not be liable for incidental or consequential damages in connection with or arising out of the furnishing, performance, or use of this document and the program material which it describes.

TABLE OF CONTENTS

Product Use Description.....	1
Important Safety Instructions	
Symbol Identification	1
Safety Instructions	2
Product Description & Photo	
Lounger	3
Installation	
Grounding	4
Moving the Table	5
Table Leveling	5
Directions for Use	
Removing Top Pad.....	6
Pull Out Shelf (Option)	7
Accessories	8-10
Cleaning & Disinfection	
Recommended Cleaners/Disinfectants	11
Cleaning Process	11
Model Number & Serial Number	12-13
Inspections & Maintenance	14
Warranty Information.....	14
Specifications	
Environmental Conditions.....	14
Electronic Specifications.....	14
Contact Information	back cover

PRODUCT USE DESCRIPTION / IMPORTANT SAFETY INSTRUCTIONS

PRODUCT USE DESCRIPTION

The Lounger offers a zero-gravity curve shape top to provide comfort for relaxation purposes. The Lounger is to be used before, during, and/or after various treatments.

It is intended to be operated by the clinician in a professional environment. No special training is required but a review of the following Safety Instructions is important for the safety of the operator. The clinician should read and understand this entire manual before use with a patient. There are no known contraindications to the use of this equipment.

The Lounger should not be used in any other manner than that described within this manual. Use of any unnecessary force or unauthorized procedures could result in injury to practitioner, patient or equipment.

SYMBOL IDENTIFICATION



This symbol, when used in this manual and on product labels, represents a caution warning. Be sure to read and comply with all precautions and warnings.



This symbol, when used in this manual and on product labels, warns against an electrical shock hazard. Be sure to observe and comply with all warnings.



This symbol, when used in this manual or on product labels, indicates a Protective Earth (Ground) Terminal.



This symbol, when used in this manual and on product labels, indicates the name and address of the manufacturer.



This symbol, when used in this manual or on product labels, indicates the country of manufacture along with date of manufacture of the device next to it.



This symbol, when used in this manual or on product labels, indicates alternating current (AC).



This symbol, when used in this manual or on product labels, indicates direct current (DC).



This symbol is used to indicate that the operator should consult the user manual.

IMPORTANT SAFETY INSTRUCTIONS

IMPORTANT SAFETY INSTRUCTIONS



CAUTION

READ AND SAVE THESE INSTRUCTIONS

The use of accessories, transducers, and cables other than those specified by the manufacturer, may result in increased emissions or decreased immunity of the table.

The table is designed to be a stand-alone table. This table must not be modified or incorporated into any other equipment.

Proper operation of this equipment is very important for the safety of the operator, patient, and any other individuals in the area of this equipment. Directions for use of this equipment are described in this manual. The operator should read these sections carefully.

Weight Limit: (client and accessories) 500 lbs. (227 kg) Do not exceed.

This table is not suitable for use in the presence of flammable anesthetic mixture with air or oxygen or nitrous oxide.

Do not operate where aerosol (spray) products are being used or where oxygen is being administered.

Do not lift table by the table top. This can damage the table.

Use this furnishing only for its intended use as described in these instructions. Do not use attachments not recommended by the manufacturer.

Close supervision is necessary when this furnishing is used by, or near children, invalids, or disabled persons.



WARNING

To reduce the risk of burns, fire, electric shock or injury to persons:

1. Unplug this furnishing from the electrical outlet before cleaning.
2. Unplug from outlet before adding or removing parts.
3. Never operate this furnishing if it has a damaged cord or plug, if it is not working properly, if it has been dropped or damaged, or dropped into water. Contact Oakworks Customer Service before use at 717.235.6807.
4. Keep the cord away from heated surfaces.
5. Never drop or insert any object into any opening.
6. Do not use outdoors.
7. Do not operate where aerosol (spray) products are being used or where oxygen is being administered.



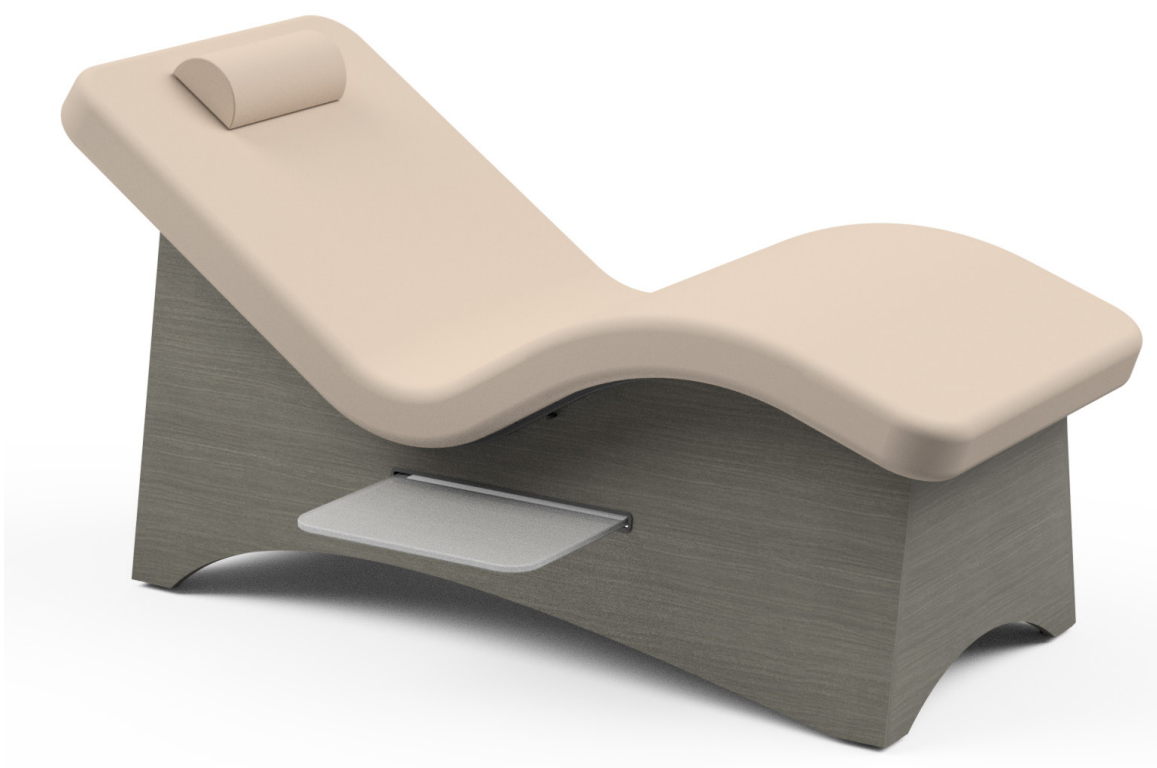
DANGER

Risk of electric shock - Connect this furnishing to a properly grounded outlet only. See Grounding Instructions in this manual.

Electrical Shock Hazard - No user serviceable parts are inside. Refer servicing to qualified personnel. Unplug wall plug prior to contact with any cables connected to the power supply.

PRODUCT DESCRIPTION

Lounger



STANDARD SPECIFICATIONS	
Seat Height	18" (46 cm.)
Table Voltage Options	None or 120V/60Hz - 230V/50Hz
Table Capacity	500 lbs. (227 kg.) (Client and accessories)
Width	31" (79 cm.)
Pad Length	75" (109.5 cm.)
Table Length	69" (175 cm.)
Padding	4" (10 cm.)
Table Weight	125 lbs. (57 kg.)

OPTIONS - WELLNESS
Wood and Laminate Finishes
Pull Out Shelf
External Outlet

ACCESSORIES
Adjustable Neck Pillow
Multi-purpose Pole
Attachment Clamp
Armrest Bolster
Armrest Stand

INSTALLATION

All tables come completely assembled and ready to use. Plug the cord into a functioning outlet that is rated for the table as applicable. (See Grounding below)

Arrange the power cord so that they will not create a tripping hazard.

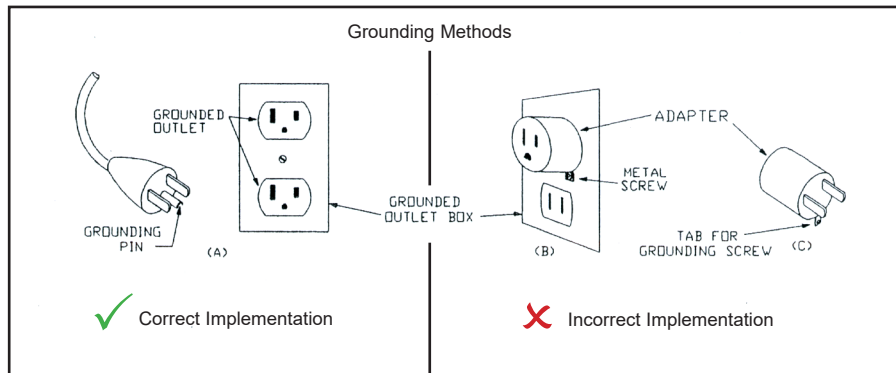
Be sure access to plug is not blocked for disconnecting the table from power.

GROUNDING



DANGER Risk of Electric Shock - Connect this furnishing to a properly grounded outlet only.

This product must be grounded. If it should malfunction or break down, grounding provides a path of least resistance for electrical current to reduce the risk of electric shock. This product is equipped with a cord having an equipment-grounding conductor and a grounding pin. The pin must be plugged into an appropriate outlet that is properly installed and grounded in accordance with all local codes and ordinances. See U.S. Sample below.



Improper connection of the equipment-grounding conductor can result in a risk of electric shock. Check with a qualified electrician or service person if you are in doubt as to whether the product is properly grounded. Do not modify the plug provided with the product - if it will not fit the outlet; have a proper outlet installed by a qualified electrician.

INSTALLATION

MOVING THE TABLE



CAUTION

Before moving the table, disconnect the power cord from the power outlet. Secure the power cord before moving. The table weighs as much as 125 lbs. (57 kg.) Two people are required to move the table safely. Do not use the table to transport a patient.

When moving the table, place one person at the head end and the other person at the foot end of the table. Have each person firmly grasp the table top. When moving any piece of heavy equipment, bend at the knee and lift with your legs and not with your back. Be aware and use proper, safe procedures for moving a table of this size to prevent injury to yourself or damage to the table. We strongly recommend that a flatbed dolly that can hold the entire table be used if moving the table involves any large distance.

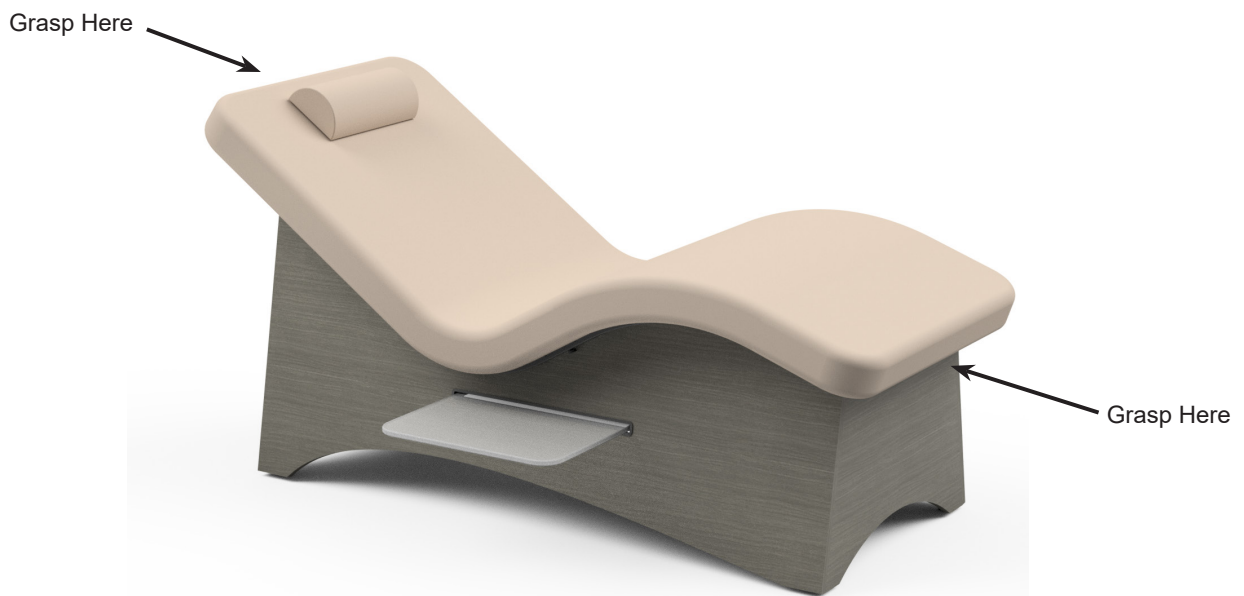


TABLE LEVELING INSTRUCTIONS

1. Place the table in the location where you plan to use it.
2. Rock the table to determine if it is level with the floor. If the table rocks back and forth at all, the foot that clears the floor when you rock the table will need adjustment.
3. Adjust the Leveler Foot by turning it counterclockwise to loosen.
4. Lower the adjustable rubber Leveler Foot until it meets the floor snugly.
5. Rock the table again to be sure adjustments have stabilized the table. If necessary make any additional adjustments in the same way.



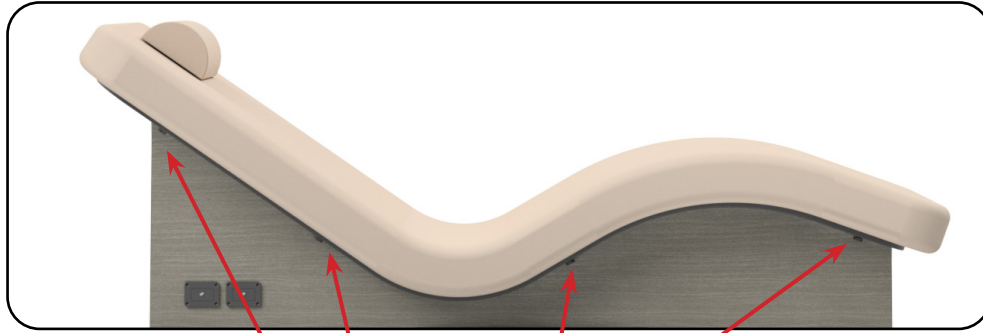
DIRECTIONS FOR USE

REMOVING TOP PAD

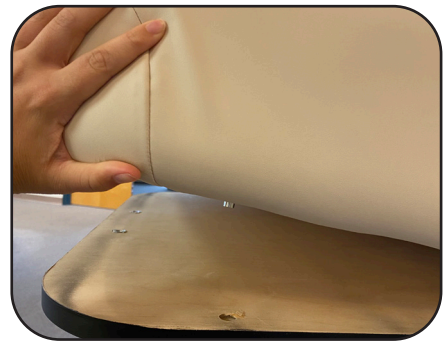
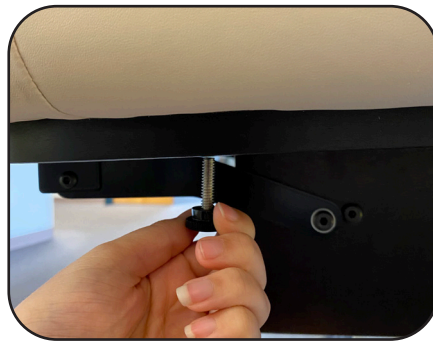
The top pad has been designed to be easily removable and replaceable with no tools needed.

TO REMOVE THE TOP PAD:

The top pad is attached to the platform with 8 thumb screws located below the platform as shown.



Thumb Screw Locations (4 per side)



1. Unscrew the thumb screw clockwise until the thumb screw is completely removed. Repeat for all 8 thumb screws. If the thumbs screws are on too tight, a 3/16" hex bit can be used.

2. Lift top pad off the platform.

DIRECTIONS FOR USE

PULL OUT SHELF (OPTION)

The table has an optional pull out shelf that can be pulled out either to the left, right, or stay in a neutral position in the middle to be out of the way.

To operate the pull out shelf, pull or push the shelf in the desired direction. There is a stop to prevent the shelf from being pulled out more than the maximum distance.



LEFT



RIGHT

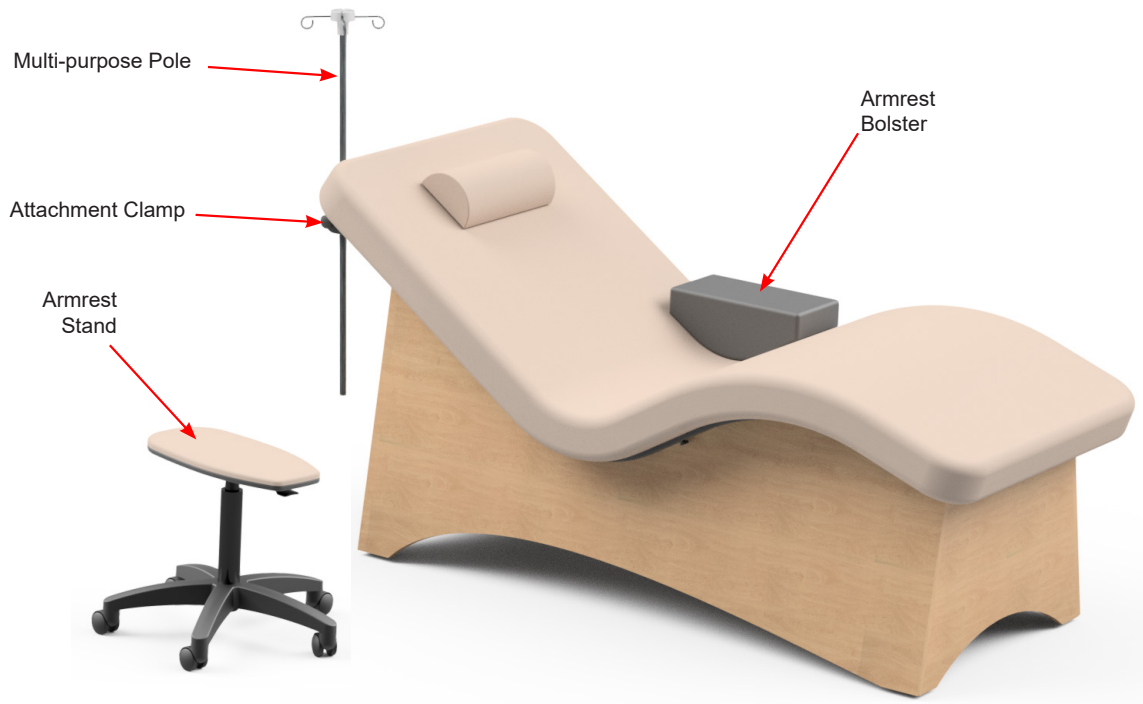


NEUTRAL POSITION

DIRECTIONS FOR USE

ACCESSORIES

Accessories Product Description



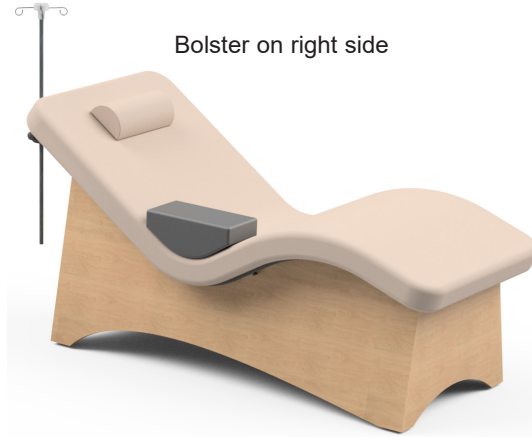
STANDARD SPECIFICATIONS	
Attachment Clamp	2.3" x 2.3" x 6.9" (5.8 cm x 5.8 cm x 17.5 cm)
Multi-purpose Pole	0.5" Dia x 38" L (1.3 cm Dia x 96.5 cm L)
Armrest Bolster	14.0" x 5.5" x 7.0" (35.6 cm x 14.0 cm x 17.8 cm)
Armrest Stand Height Range	16.8" - 24.7" (42.7 cm - 62.7 cm)
Armrest Stand Pad	18.0" x 9.0" x 1.0" (45.7 cm x 22.9 cm x 2.5 cm)

DIRECTIONS FOR USE

ARMREST BOLSTER USE

! **CAUTION** Bolster weight limit: 40 lbs. (18 kg).

The Armrest Bolster can be placed on either side of the product and fits in the contour of the seat area. Adjust the bolster to fit the client.



ARMREST STAND USE

! **CAUTION** Armrest Stand weight limit: 300 lbs. (136 kg).
Ensure the casters are locked when using the Armrest Stand for any treatment.

Roll the Armrest Stand into position on either side of the product. Adjust the height of the Armrest based on the client. Ensure to lock the casters prior to use with the Armrest Stand.



Armrest Stand Height Function:

- To raise the Armrest Stand, locate and pull up on the adjustment lever to the desired height.
- To lower the armrest stand, use your knee or sit on the armrest stand and lower the height using the adjustment lever.

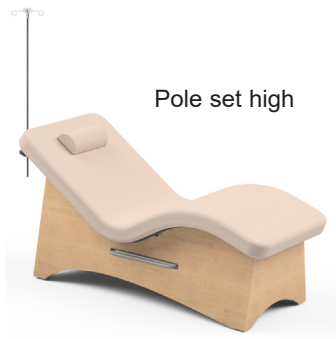


DIRECTIONS FOR USE

MULTI-PURPOSE POLE AND ATTACHMENT CLAMP USE

⚠ CAUTION Pole & Clamp weight limit: 20 lbs. (9 kg).

The Multi-purpose Pole height can be adjusted up or down by loosening the knob on the Attachment Clamp and sliding the pole up or down.

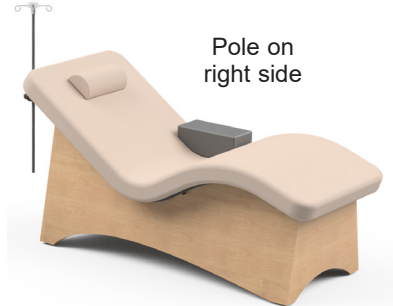


The Attachment Clamp can be adjusted on either side of the table:

1) Remove the thumbscrews from the backrest end of the tabletop.



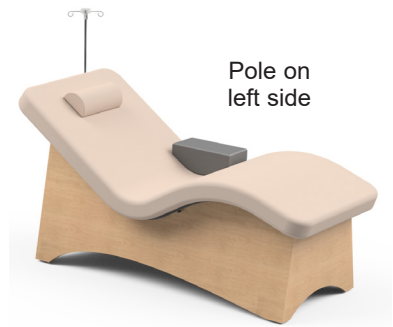
2) Lift the pad up.



3) Remove the 4 screws that attach the clamp to the frame (5/32").



4) Locate the mounting holes on the other side of the frame and reattach the clamp.



CLEANING & DISINFECTION

RECOMMENDED CLEANERS/DISINFECTANTS



DANGER

To reduce the risk of electric shock:

- Always unplug this furnishing from the electrical outlet before cleaning.

Reference the Recommended Cleaners and Disinfectant list (MMINML0008-EN) that came with the table. This information can also be found at www.shop.spatables.com under product information.

All cleaners and disinfectants have the ability to degrade the upholstery to some extent. However, following the recommended cleaner and disinfectant list and cleaning process will provide the best care for your table and support a long product life.

OAKWORKS® recommends a prepackaged wipe for cleaners/disinfectants to ensure best distribution of disinfectant for the required kill time, without leaving excess residue and/or overexposing components therefore minimizing the potential for damage to materials. Please read and follow disinfectants manufacturers' directions for cleaning and disinfection.

OAKWORKS® does NOT recommend the use of cleaners/disinfectants containing Hydrogen Peroxide, Acetic Acid, or Phenolics. These chemicals can cause damage to the appearance and/or material integrity of various components. Also, while the recommended cleaners/disinfectants list includes products containing Quaternary Ammonium compounds ("quats"), not all products containing quats are approved for use. Some contain additional detergents and/or surfactants which can damage some materials.

Use of non-approved cleaners or disinfectants may lead to damage to upholstery and other materials found on the table and will void the warranty.

CLEANING PROCESS

Follow the cleaners/disinfectant manufacturers' directions for use. Please note that cleaning and disinfecting an OAKWORKS® table is a two part process. First it must be cleaned of any visible soil, then it can be disinfected. OAKWORKS® recommends that the table be positioned in the flat position during the cleaning process. Please follow this procedure for best results:

1. Using an approved cleaner or mild liquid soap and water, clean any visible soil off of the table, working from the top to the bottom of the table. It is recommended that the upholstery be cleaned at least once a week to prevent disinfectant build up.
2. Rinse with clean water and dry with a clean cloth or towel.
3. Using an approved disinfectant, thoroughly disinfect all surfaces of the tabletop and any high-contact areas such as handles, handsets, etc., making sure they remain wet for the disinfectant manufacturer's recommended contact time. Do not allow disinfectant to pool on the upholstery after the recommended contact time.
4. Wipe off any excess liquid with a cloth or towel and clean water.
5. Dry all surfaces with a clean cloth or towel.

Avoid using writing instruments or other similar instruments around the upholstery as it can cause permanent staining. If this does occur, do not wipe with an alcohol based cleaner. Instead, blot the stain with a clean cloth/ paper towel. Use a recommended cleaner or disinfectant to remove the stain. Follow this with a rinse of clean water.

MODEL NUMBER & SERIAL NUMBER

MODEL & SERIAL NUMBERS

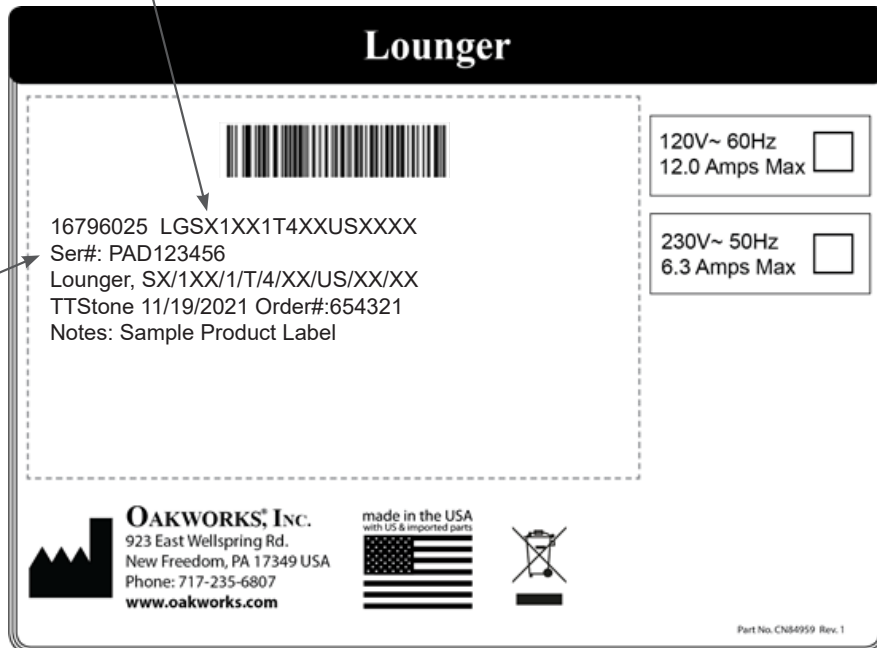


The model number and serial numbers are located underneath the top pad.

Remove bottom two thumb screws and lift up the pad.

Model Number

Serial Number



Model and Serial numbers always start with a letter.

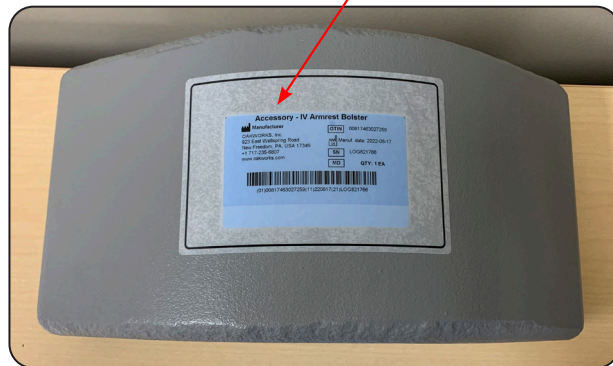
MODEL NUMBER & SERIAL NUMBER

MODEL & SERIAL NUMBERS



Attachment Clamp:
UDI Label located on side opposite of knob

Armrest Bolster:
UDI Label located on curved (bottom) side



Armrest Stand:
UDI Label located on underside of platform



Accessory - Armrest Stand

Manufacturer:
 Oakworks, Inc.
 923 East Wellspring Road
 New Freedom, PA, USA 17349
 +1 717-235-6807
 www.oakworks.com

GTIN 00817463027266
LOT 2022-08-17
MD QTY: 1 EA

(01)00817463027266(11)220817(10)220817

GTIN
Manufacture Date
Serial Number

Model Name

- Unique Device Information:
- GTIN - 14 digit number unique for each variation of a model
 - Manufacture Date - Country of manufacture and date the device goes into production in YYYY-MM-DD format
 - LOT - Lot Number
 - MD - Medical Device Symbol
 - QTY - Quantity of the product

INSPECTIONS / WARRANTY/ SPECIFICATIONS

INSPECTIONS

RECOMMENDED REGULAR INSPECTIONS (monthly or local standard)

- Check for damage to the power cables on all cables.
- Visually inspect components for obvious damage that could cause problems during operation.

RECOMMENDED PERIODIC INSPECTIONS (yearly or local standard)

- Check for damage to the power cables and all visible wiring.
- Visually inspect components for obvious damage that could cause problems during operation.
- Check that all fasteners are present and fastened securely.
- Check table grounding.
- Clean unusual buildup of dirt on the table and/or parts of the table not normally cleaned on a regular basis.
- Check for tears or cracks in the upholstery.

WARRANTY

View complete warranty details at www.shop.spatables.com under the Information tab "Warranty and Return Policy".

SPECIFICATIONS

ENVIRONMENTAL CONDITIONS

Conditions	Temperature	Humidity	Atmospheric Pressure
Normal Use	50° (10°C) to 104° (40°C)	20% to 60% RH	98 to 105 kPa
Storage & Transport	-20° (-29°C) to 135° (57°C)	20% to 95% RH	98 to 105 kPa

ELECTRICAL SPECIFICATIONS

Designed for:	North America	Europe
Input Service	120 VAC/15 amp/60 Hz	220 VAC/10 amp/50/60 Hz
Plug Type	Type B (NEMA 5-15)	-Type I Plug (AS/NZS 3112) -Type J Plug (SEV 1011) -Type F Plug (CEE 7) -Type G Plug (BS 1363) -Type D Plug (BS 546 5A) -Type M Plug (BS 546 15A)

USER MANUAL - WELLNESS

OAKWORKS® Lounger

CONTACT INFORMATION:



OAKWORKS® Inc.

923 East Wellspring Road
New Freedom, PA 17349

Phone: 717.235.6807

FAX: 717.235.6798

www.oakworks.com

Original Instructions
Manual Part Number: SPA-RA-PM-175
Revision Level: 1
Revision Date: 08/05/2025

English, Printed in USA



OAKWORKS® Spa